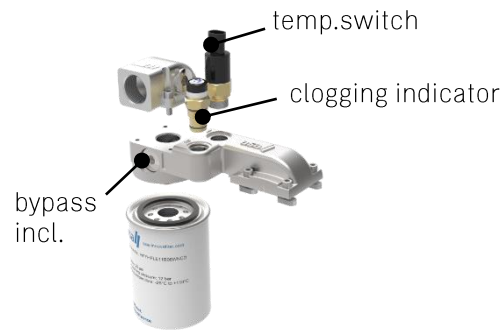
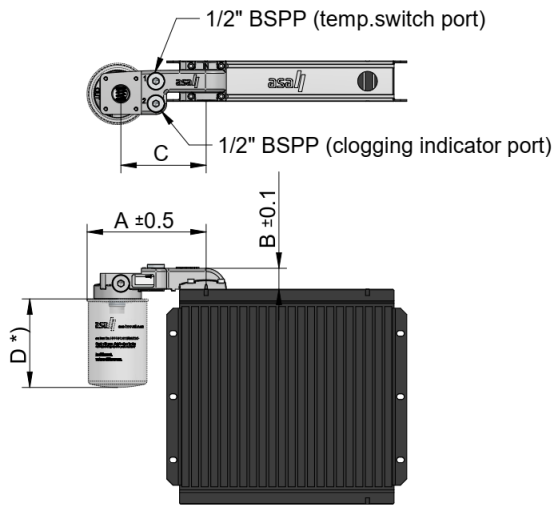


Thermal Systems, Oil / Air Coolers

Tank-Filter-Range / H-Set



The H-Set is an optional system to integrate another hydraulic set to the asa rail system. The H-Set currently offers 2 sizes of kits to mount a spin on filter to the cooler application. This is a very compact and cost efficient integration. This system can also be combined with various other filters or the shown configurations. Contact us for further options and assistance to select the optimal product for you.



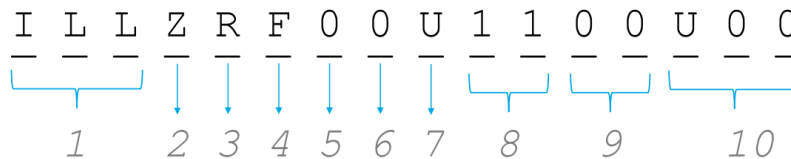
- compact filter integration
- standard spin on filter
- compatible to whole rail series

*) depending on the make of the filter element

Dimension

| order number | description | filter rating | working pressure | bypass | spin on port | A | B | C | D |
|------------------|-------------------------------------|---------------|------------------|--------|--------------|------|------|------|------|
| | | [µm] | [PSI] | [PSI] | [UN] | [in] | [in] | [in] | [in] |
| ILLZRF11U1110U00 | Spin on filter kit rail 10µm, 16gpm | 10 | 145 | 30 | 1"-12 UNF | 7.42 | 1.30 | 5.31 | 5.75 |
| ILLZRF11U1125U00 | Spin on filter kit rail 25µm, 16gpm | 25 | 145 | 30 | 1"-12 UNF | 7.42 | 1.30 | 5.31 | 5.75 |
| ILLZRF12U1110U00 | Spin on filter kit rail 10µm, 26gpm | 10 | 145 | 30 | 1"-12 UNF | 7.42 | 1.30 | 5.31 | 7.52 |
| ILLZRF12U1125U00 | Spin on filter kit rail 25µm, 26gpm | 25 | 145 | 30 | 1"-12 UNF | 7.42 | 1.30 | 5.31 | 7.52 |
| ILLZRF21U2410U00 | Spin on filter kit rail 10µm, 50gpm | - | 145 | 30 | 1 ½"-16 UN | 8.98 | 1.85 | 6.30 | - |
| ILLZRF21U2425U00 | Spin on filter kit rail 25µm, 50gpm | - | 145 | 30 | 1 ½"-16 UN | 8.98 | 1.85 | 6.30 | - |
| ILLZRF22U2410U00 | Spin on filter kit rail 10µm, 60gpm | - | 145 | 30 | 1 ½"-16 UN | 8.98 | 1.85 | 6.30 | - |
| ILLZRF22U2425U00 | Spin on filter kit rail 25µm, 60gpm | - | 145 | 30 | 1 ½"-16 UN | 8.98 | 1.85 | 6.30 | - |

Article Code



1 Product Series

| | |
|-----|-----------------|
| ILL | Oil/air coolers |
|-----|-----------------|

2 Design Type

| | |
|---|-------------|
| Z | Accessories |
|---|-------------|

3 Design Type

| | |
|---|-------------|
| R | Rail system |
|---|-------------|

4 Design Type

| | |
|---|--------|
| F | Filter |
|---|--------|

5 Spin on filter size

| | |
|---|-------------------|
| 0 | no filter |
| 1 | size 1 (Ø3.65 in) |
| 2 | size 2 (Ø5.08 in) |

6 Spin on filter length

| | |
|---|-----------------------|
| 0 | no filter |
| 1 | filter length (short) |
| 2 | filter length (long) |

7 Connection standard

| | |
|---|------------------|
| U | SAE o-ring (UNF) |
|---|------------------|

8 Connection size

| | |
|----|------------|
| 11 | 1"-12 UNF |
| 24 | 1 ½"-16 UN |

9 Filter rating

| | |
|----|-----------|
| 00 | no filter |
| 10 | 10 µm |
| 25 | 25 µm |

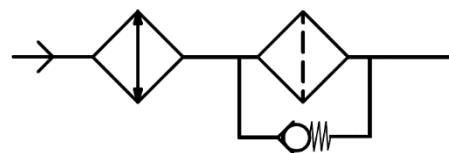
10 Options

| | |
|-----|--|
| Uxx | Special / customized specifications, to be advised |
| U00 | standard US sales kit |

This data sheet and the corresponding scale drawings are to be used as a general guideline and technical overview of our products. Please contact us if more exact information is needed. As we are constantly improving our products, their characteristics, dimensions and weights may also change, although we do our best to incorporate these changes continually. asa assumes no liability for any information therein, any errors, omissions, misprints, nor any direct or indirect damages, losses or costs resulting therefrom. Any cooling performances and general technical values indicated in this catalogue are measured at a test bench according to asa testing procedures or calculated, based on such tests. They represent a basis for your product selection. Due to different conditions in testing and application environments the performance may also vary by +/- 15%. All sound values are determined in accordance with ISO 9614-2, DIN EN ISO 11203 accuracy class 3 or Machinery Directive 2006/42/EG and are A-rated. At some of the performance data, possible differences to competition data are possible. The reason to that are no existing standardized testing procedures on individual subjects, e.g. for cooling performance measurements. Therefore, we recommend all products to be checked under the system operating conditions. This is also true of vibrations and mechanical stress as well as for pressure peaks and thermal stress and any other relevant factors. General tolerances according to DIN ISO 2768-VL. General tolerances for casted parts according EN ISO 8062-3 (DCTG 10). Tolerances for rubber parts are according to ISO 3302-1 (class M4-F+C). The tolerances of welding seams are defined by quality group D according to EN ISO 10042, if it is not specified on the actual scale drawing or data sheet. Any form of liability is excluded for the information included in this datasheet. All details and calculation values are checked to the best of our ability, but these do not ensure any intrinsic product properties; due to the wide-ranging possible applications, it is advised that all technical data herewith included be confirmed through testing carried out by the end-user. asa technology Produktions- und Vertriebs GmbH reserves the right to modify the product without any separate notification. This refers to both technical data and the product itself. Furthermore, it is herewith specified that the datasheet does not substitute the corresponding scale drawings, assembly and installation guidelines, nor the operating instructions.

asa

| | |
|----------------------------|-----------------------------------|
| material: | aluminium |
| working temperature range: | -4°F to +212°F (oil temperature)* |
| Sealing to rail flange: | o-ring NBR |
| bypass: | incl.30 PSI bar standard setting |



| | |
|---------------|------------------------|
| compatible to | any rail system cooler |
|---------------|------------------------|

| | |
|------------------|---|
| main application | offline circuits, lubrication, cooling and filtration circuits |
| oil flow | from cooler to filter |



| | |
|--|--|
| temperature switches | ILLZTH5069KU00, ILLZTH4765KU00, ILLZTH6065KU00 |
| clogging indicator / indication pressure 21.8 PSI | electric: HFZVEG15KU00 N.O. & N.C.contact optical: HFZVOG15KU00 |

This data sheet and the corresponding scale drawings are to be used as a general guideline and technical overview of our products. Please contact us if more exact information is needed. As we are constantly improving our products, their characteristics, dimensions and weights may also change, although we do our best to incorporate these changes continually. **asa** assumes no liability for any information therein, any errors, omissions, misprints, nor any direct or indirect damages, losses or costs resulting therefrom. Any cooling performances and general technical values indicated in this catalogue are measured at a test bench according to **asa** test procedures or calculated, based on our tests. They represent a basis for your product selection. Due to different conditions in test and application, the actual values may also vary by **±10%**. All count values are determined in accordance with ISO 9614-2, DIN EN ISO 11212 and ISO 11213. The tolerances of the products are determined in accordance with the Machinery Directive 2006/42/EG and are A-rated. At some of the performance data, possible differences to competition data are possible. The reason for that are no existing standardized testing procedures on individual subjects, e.g. for cooling performance measurements. Therefore, we recommend all products to be checked under the system operating conditions. This is also true of vibrations and mechanical stress as well as for pressure peaks and thermal stress and any other relevant factors. General tolerances according to DIN ISO 2768-**u**. General tolerances for casted parts according to EN ISO 8062-3 (DCTG 10). Tolerances for rubber parts are according to ISO 3302-1 (class M4-F=C). The tolerances of welding seams are defined by quality group D according to EN ISO 10042, if it is not specified on the actual scale drawing or data sheet. Any form of liability is excluded for the information included in this datasheet. All details and calculation values are checked to the best of our ability, but these do not ensure any intrinsic product properties; due to the wide-ranging possible applications, it is advised that all technical data herewith included be confirmed through testing carried out by the end-user. **asa technology Produktions- und Vertriebs GmbH** reserves the right to modify the product without any separate notification. This refers to both technical data and the product itself. Furthermore, it is herewith specified that the datasheet does not substitute the corresponding scale drawings, assembly and installation guidelines, nor the operating instructions.

DD-112 ZRF -us-rev0 © asa america, May 2023 2/2